

400 SERIES

WOODWRIGHT® DOUBLE-HUNG INSERT WINDOWS

400 Series
Woodwright® Double-Hung
Insert Windows

SECTION REFERENCE

Size Ranges	78
Opening Specifications	78
Existing Window Measurements	79
Sill Angle Details	79
Divided Light Patterns	80
Window Details	80
Joining Details	80
Performance Data	269

WOODWRIGHT® DOUBLE-HUNG INSERT WINDOWS

CUSTOM SIZING!
in 1/8" increments

Features

FRAME

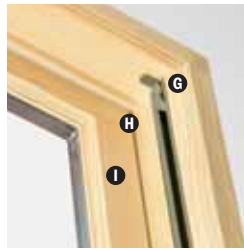
- A** Perma-Shield® exterior cladding protects the frame — beautifully. Best of all, it's low-maintenance and long-lived. You never have to paint it*.
- B** For exceptionally long-lasting* performance, sill members are constructed with a wood core and a Fibrex® composite material exterior.
- C** Natural wood stops are available in pine, oak, maple or painted white. Wood jamb liners add beauty and authenticity to the window interior.



- D** Weatherstripping system provides a barrier against wind, rain and dust. The combination of spring tension vinyl, rigid vinyl and flexible bulb weatherstripping is efficient and effective.
- E** Exterior stop covers are specially designed to allow easy application of high-quality sealant.

3 1/4" "pocket window" jamb depth allows convenient replacement without disturbing interior window trim for most double-hung replacement situations.

- F** For units with White exterior color, exterior jamb liner is white. For all other units the exterior jamb liner is gray.



Wood Jamb Liner

SASH

- G** Slide wash assists make it easy to tilt the sash into wash mode.
- H** Balancers in the sash enable contractors to screw through the jamb during installation without interfering with the window's operation.
- I** Natural wood sash interior with classic chamfer detailing. Available in pine, oak, maple or painted white.
- J** Low-maintenance sash exterior provides long-lasting* protection and performance. Sash exteriors on most units include patented Fibrex® material.
- K** Sash joints simulate the look of traditional mortise-and-tenon construction inside and out.
- L** Silicone bed glazing provides superior weathertightness and durability.

GLASS



- M** High-Performance™ glass options include:
 - Low-E4® glass
 - Low-E4® SmartSun™ glass
 - Low-E4® Sun glass

Tempered glass and other glass options are available. Contact your Andersen supplier. (Glass option must be specified.)

PATTERNED GLASS

Patterned glass options are available. See page 12 for more details.

* For complete information on our limited warranties, visit andersenwindows.com or contact your Andersen supplier.

Exterior



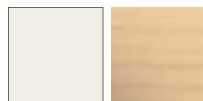
White Sandtone



Terratone® Forest Green

Specify a unit exterior option and an interior option to complete your order.

Interior



white pine



oak maple

Naturally occurring variations in grain, color and texture make each window one-of-a-kind.

Hardware

Sold separately except where noted.

Lock & Keeper



The cam-operated lock & keeper is designed for easy operation and long life* and comes standard with double-hung windows. Stone finish is standard with wood interior units. White finish comes with prefinished white interiors. Available in white or stone finish.



Estate™

Optional Estate lock & keeper. Available in bright brass, antique brass, polished chrome, brushed chrome, oil rubbed bronze, **satin nickel**, distressed bronze and distressed nickel. Optional Estate lock & keeper reduces the clear opening height by 1/32". Check with local building code officials to determine compliance with egress requirements.

Double-Hung Lifts

CLASSIC SERIES™



Sash Lift



Hand Lift



Finger Lift

Optional Classic Series lifts are available in white or stone finish.

ESTATE™



Hand Lift



Finger Lift

Optional Estate lifts are available in bright brass, antique brass, polished chrome, brushed chrome, **satin nickel**, oil rubbed bronze, distressed nickel and distressed bronze.

TRADITIONAL



Bar Lift



Hand Lift



Finger Lift

Optional Traditional lifts are available in bright brass, antique brass, polished chrome, brushed chrome, **oil rubbed bronze**, white and stone.

Bold names denote finish shown.

Hardware Finishes



bright brass antique brass polished chrome brushed chrome satin nickel oil rubbed bronze distressed nickel distressed bronze white stone

Printing limitations prevent exact finish replication. See your Andersen supplier for actual color samples.

Accessories

Sold Separately.



Installation Kit

An installation kit, which includes installation screws, straight shims and backer rod, is included with each Woodwright[®] insert window.

SILL ANGLES

3 sill angles are available — 0°, 8° and 14° — to closely match the existing sill in window replacement applications. See page 79 for more details.



0° Sill Angle



8° Sill Angle



14° Sill Angle



Exterior Stop Cover

An exterior stop cover provides a clean transition from new window to the existing window casing.

FRAME



Wood Interior Stop

Optional interior stop with matching chamfer is available.

INSECT SCREENS

EXCLUSIVE

TruScene[®] Insect Screen

TruScene insect screens are made with a micro-fine stainless steel mesh that's one-third the diameter of our aluminum screen wire. They provide 50% more clarity than our conventional insect screens. They also let more sunlight and fresh air into the home.

Conventional Insect Screen

Conventional insect screens come with charcoal powder-coated aluminum screen cloth.



Insect Screen Frames

Choose full insect screen or half insect screen. Half insect screen (shown above) allows ventilation without affecting the view through the upper sash. Available in White, Sandtone, Terratone[®] and Forest Green colors to match product exteriors.

For more information about **glass, patterned glass, grilles, TruScene[®] insect screen and installation accessories**, see pages 12–32 or visit

 andersenwindows.com

INSTALLATION



Coil Stock

Andersen[®] aluminum coil stock can be ordered to match any of our 11 trim colors. Made from .019-gauge aluminum, Andersen coil stock is available in 24" x 50' rolls. Color-matched 1 1/4" stainless steel trim nails are also available and can be ordered in 1 lb. boxes.



Opening Control Device Kit

A Window Opening Control Device Kit is available, which limits raising the sash to less than 4 inches when the window is first opened. Available in Stone and White. Device shown on a 400 Series Tilt-Wash Double-Hung.

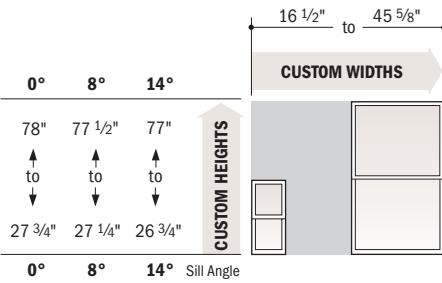
CAUTION:

- Painting and staining may cause damage to rigid vinyl.
- Products in Sandtone or Terratone[®] color may be painted any color lighter than Terratone using quality oil-base or latex paint. Submit color samples to Andersen for approval when painting White. Submit color samples to Andersen for approval when painting Sandtone or Terratone any color darker than Terratone.
- Do not paint Forest Green exteriors.
- Creosote-based stains should not come in contact with Andersen products.
- Do not paint weatherstripping.
- Abrasive cleaners or solutions containing corrosive solvents should not be used on Andersen products.
- For vinyl painting instructions and preparation, contact your Andersen supplier.
- Andersen does not warrant the adhesion of paint to vinyl.

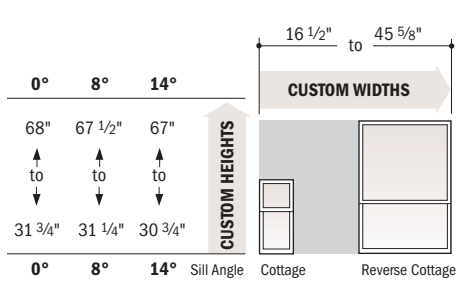
WOODWRIGHT® DOUBLE-HUNG INSERT WINDOWS

Woodwright® Insert Window Size Ranges

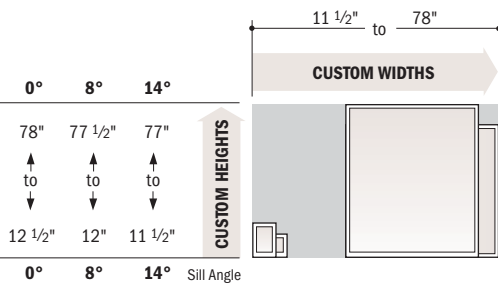
Double-Hung - Equal Sash



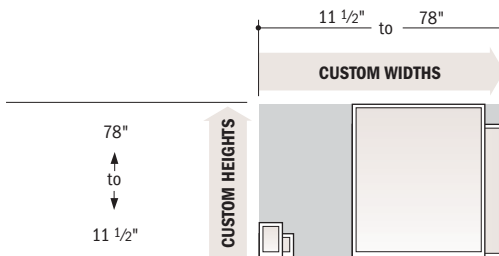
Double-Hung - Cottage & Reverse Cottage Sash



Picture



Transom



Available in 1/8" increments.

Height limits for double-hung and picture insert windows depend on new insert window sill angle.

For picture and transom insert windows, either height or width must be 68" or less and height plus width cannot be less than 28".

Divided light patterns shown on page 80.

Woodwright® Double-Hung Insert Window Opening Specifications

Sash Ratio	Clear Opening Height	Sill Angle Deductions		
		14°	8°	0°
Equal Sash	$\left(\frac{\text{Window Height}}{2}\right) \text{ minus Sill Angle Deduction}$	3 3/16"	3 7/16"	3 3/4"
Cottage (2:3 ratio)	$\left(\frac{\text{Window Height} \times 2}{5}\right) \text{ minus Sill Angle Deduction}$	2 7/8"	3 1/16"	3 1/4"
Reverse Cottage (3:2 ratio)	$\left(\frac{\text{Window Height} \times 2}{5}\right) \text{ minus Sill Angle Deduction}$	2 3/8"	2 9/16"	2 13/16"

Optional Estate™ hardware will reduce clear opening height and vent opening height by 7/32".

Sash Ratio	Vent Opening Height	Sill Angle Deductions		
		14°	8°	0°
Equal Sash	$\left(\frac{\text{Window Height}}{2}\right) \text{ minus Sill Angle Deduction}^*$	2 3/4"	2 15/16"	3 1/4"
Cottage (2:3 ratio)	$\left(\frac{\text{Window Height} \times 2}{5}\right) \text{ minus Sill Angle Deduction}^*$	1 15/16"	2 1/8"	2 3/8"
Reverse Cottage (3:2 ratio)	$\left(\frac{\text{Window Height} \times 2}{5}\right) \text{ minus Sill Angle Deduction}^*$	3 9/16"	3 13/16"	4 13/16"

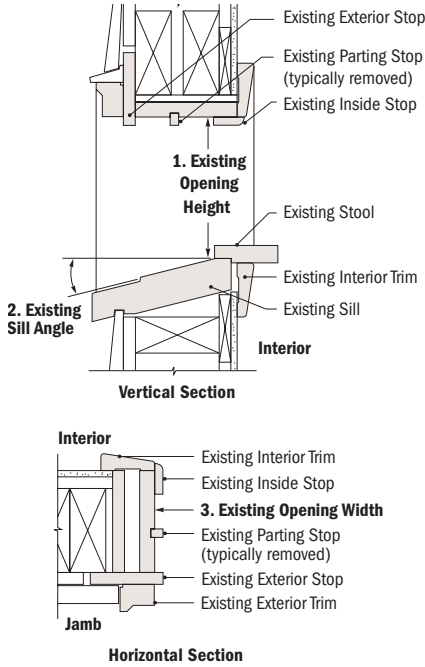
* If window is under 48" in height subtract 6 1/2". If window is 48" or greater in height subtract 11 1/2".

Sash Ratio	Visible Glass Height	Sill Angle Deductions		
		14°	8°	0°
Equal Sash (total)	Window Height minus Sill Angle Deduction	7 7/8"	8 3/8"	9"
Cottage - upper sash (2:3 ratio) Reverse Cottage - lower sash (3:2 ratio)	$\left(\frac{\text{Window Height} \times 2}{5}\right) \text{ minus Sill Angle Deduction}$	3 3/16"	3 3/8"	3 5/8"
Cottage - lower sash (2:3 ratio) Reverse Cottage - lower sash (3:2 ratio)	$\left(\frac{\text{Window Height} \times 3}{5}\right) \text{ minus Sill Angle Deduction}$	4 3/4"	5 1/16"	5 7/16"

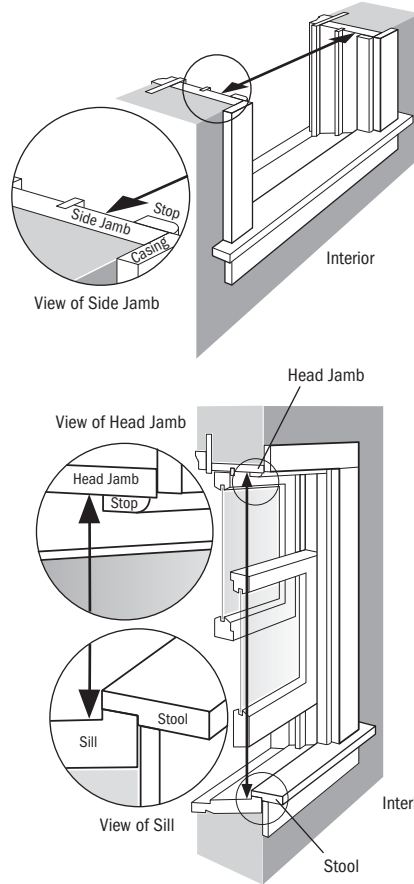
Existing Window Measurement

Required measurements:

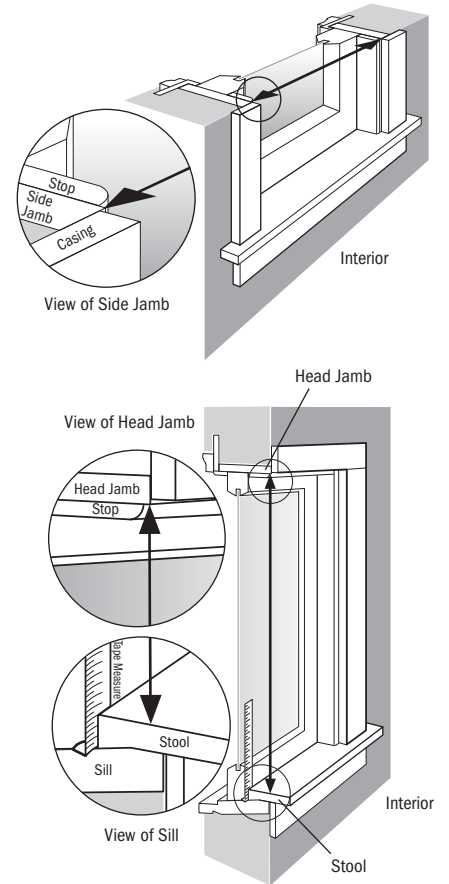
1. Existing Opening Height
2. Existing Sill Angle
3. Existing Opening Width



Existing Double-Hung Window



Existing Picture Window



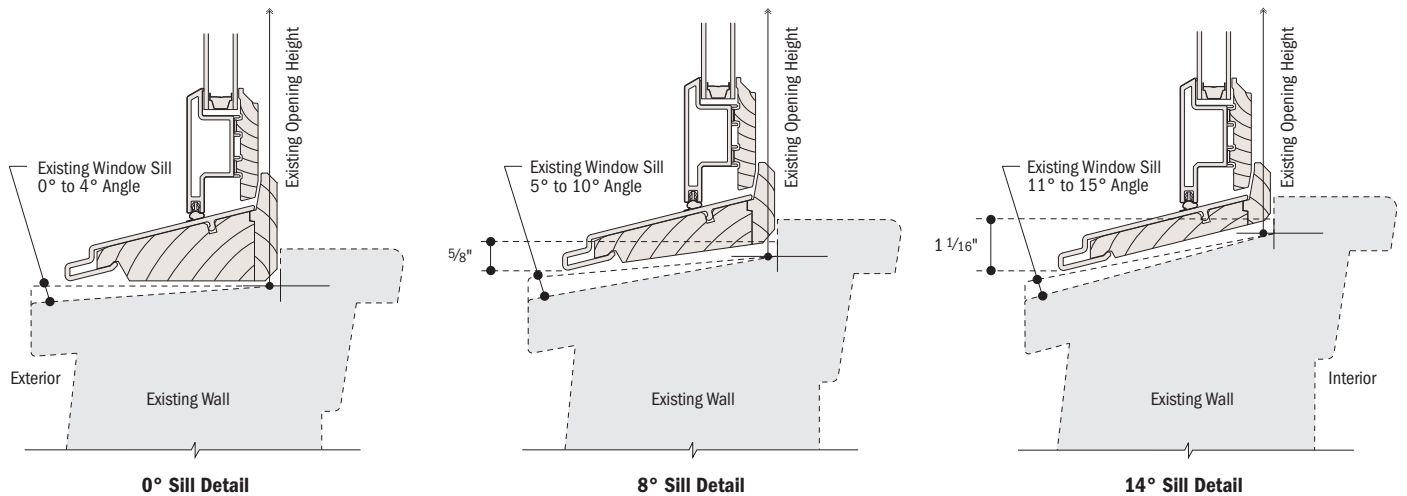
400 Series Woodwright® Double-Hung Insert Windows

Sill Angle Details

Scale 3" = 1'-0" (1:4)

Select a sill angle that most closely matches your existing sill angle.

Windows with a smaller sill angle will have a larger maximum height.



• Details are for illustration only and are not intended to represent product installation methods or materials. Refer to product installation guides at andersenwindows.com.

WOODWRIGHT® DOUBLE-HUNG INSERT WINDOWS

Divided Light Patterns

	Prairie A	6-Light Prairie	Specified Equal Light		Prairie A	Specified Equal Light
Woodwright® Double-Hung Insert				Woodwright® Transom Insert		
					Woodwright® Picture Insert	
	Equal Sash	Cottage Sash	Equal Sash			

Number of lights and overall pattern varies with window size. Patterns are not available in all configurations.

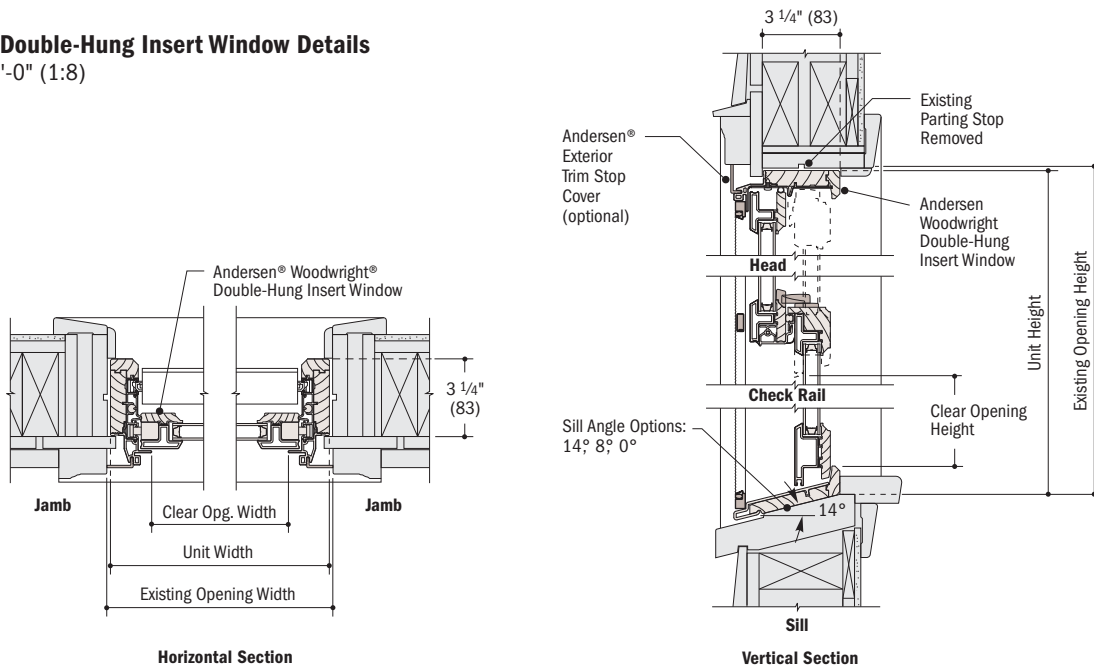
Double-hung patterns are also available in Upper Sash Only (USO) configurations.

For picture window patterns that require alignment with double-hung patterns, identify the double-hung sash style (equal, cottage, reverse cottage) when ordering.

For more information on divided light see page 13 or visit andersenwindows.com/grilles.

Woodwright® Double-Hung Insert Window Details

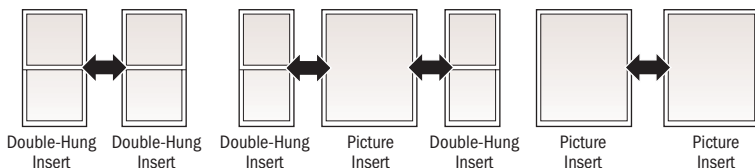
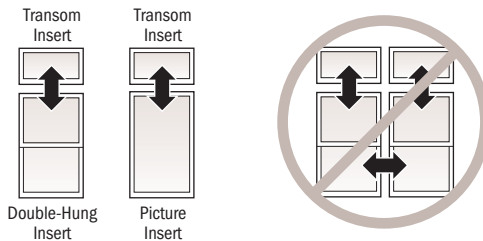
Scale 1½" = 1'-0" (1:8)



Joining Combinations

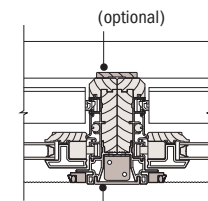
Join insert windows in 1-way horizontal (stack) or vertical (ribbon) combinations.

Do not join insert windows in 2-way combinations.



Vertical (ribbon) Non-Reinforced Joining Detail

Scale 1½" = 1'-0" (1:8)



Horizontal Section
Woodwright® Double-Hung Insert to Woodwright® Double-Hung Insert

For more joining information see the combination design section starting on page 259.

• Details are for illustration only and are not intended to represent product installation methods or materials. Refer to product installation guides at andersenwindows.com.